

Data7 Consultancy

www.data7consultancy.com

Data 7 EDS

How to move the EDS from one PC to another PC

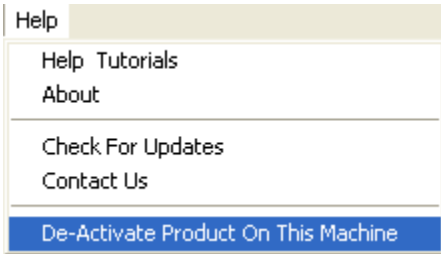
This tutorial guides you through moving your Data 7 EDS program from one PC to another. You can install the Data 7 EDS on a single PC per license purchased. You can purchase more than one license.

Step 1:

To start, open the Data 7 EDS system.

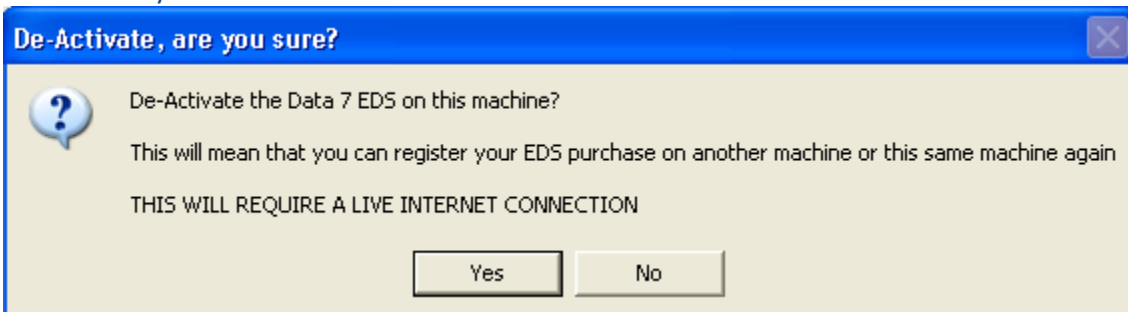
Step 2:

Choose the “De-Activate Product On This Machine” option from the “Help” menu as shown below



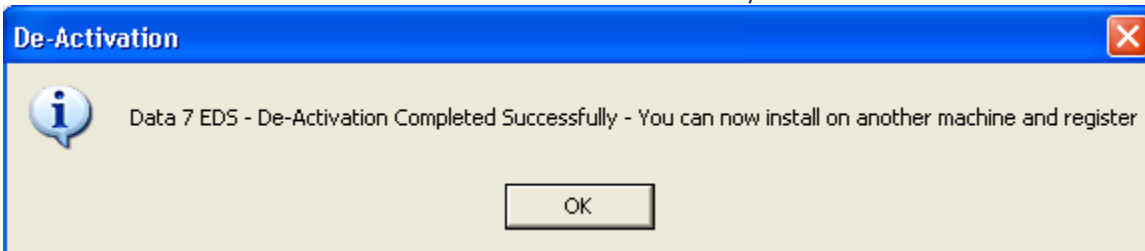
Step 3:

You'll be asked to confirm that your wish to de-activate the EDS on this machine as shown below. Click “YES” to confirm that you do wish to de-activate the Data 7 EDS on the current machine



Step 4:

You'll receive confirmation that the Data 7 EDS was successfully de-activated as show below:-



Once you click “OK” the Data 7 EDS will exit and be de-activated.

You can now install the Data 7 EDS on another machine and activate as normal.

To activate on the current machine again simply run the Data 7 EDS program and you'll be asked for your Data 7 registered email address and password. Activation is completed when you enter both the email address and password you registered with Data 7.